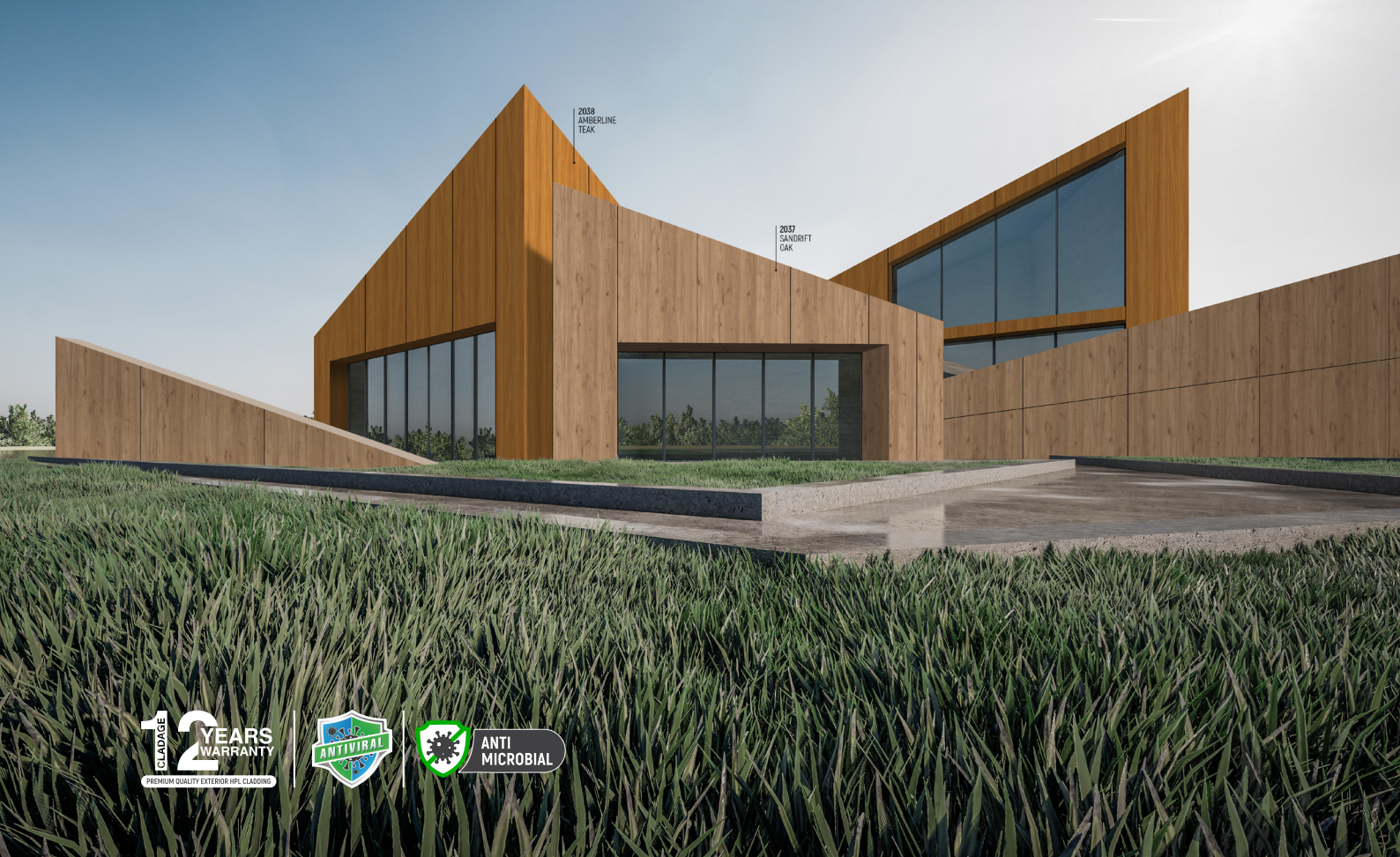


Do and Donts of HPL

Maintenance Guidelines for Exterior Compact HPL

(Aligned with EN 438 – High-Pressure Decorative Laminates)



ANTI
MICROBIAL

Exterior Compact High-Pressure Laminate (HPL) manufactured in accordance with **EN 438** is designed for long-term exterior performance, including resistance to weathering, UV exposure, and moisture.

Correct maintenance ensures preservation of **surface appearance, colour stability, and functional performance** throughout the service life of the product.

DO's – Recommended Practices

[EN 438-Consistent]



ROUTINE CLEANING

- Clean the Compact HPL surface **periodically**, depending on environmental exposure (urban, coastal, industrial).
- Use:
 - Clean water
 - Mild, non-abrasive, pH-neutral household detergents
- Apply using a **soft cloth, sponge, or soft brush**
- Rinse thoroughly with clean water after cleaning.

EN 438 recognizes Compact HPL as a finished surface material that does not require special surface treatments for routine maintenance.



USE APPROVED CLEANING AGENTS

- Use **neutral or mildly alkaline cleaning agents** only.
- Follow detergent manufacturer dilution instructions.
- Always test cleaning agents on a small, inconspicuous area before full application.



PERIODIC INSPECTION

- Inspect the installation periodically (typically once or twice per year):
 - Fixings and fasteners
 - Expansion joints and gaps
 - Panel edges and visible surfaces
- Ensure expansion allowances remain unobstructed.

EN 438 performance assumes correct installation and allowance for thermal movement.



PROMPT REMOVAL OF CONTAMINANTS

- Remove contaminants such as:
 - Dust and airborne pollutants
 - Oil or grease
 - Bird droppings
 - Construction residues
- Clean as soon as possible to avoid prolonged surface contact.



FAÇADE CLEANING METHOD

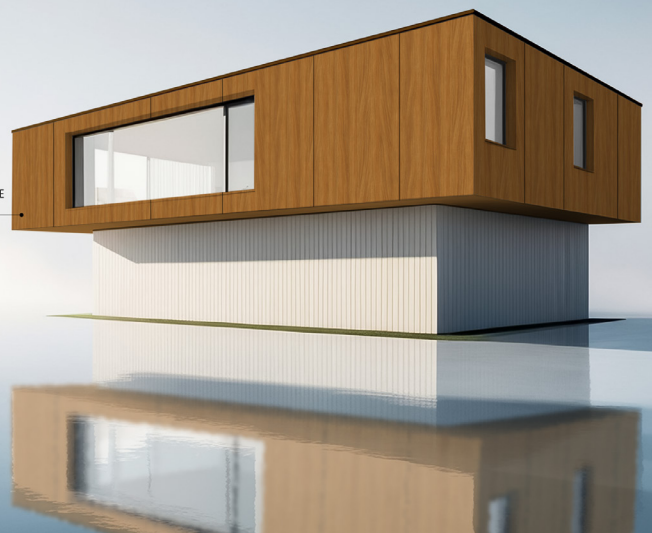
- Clean façades **from top to bottom**.
- Ensure uniform cleaning to avoid streaking or uneven appearance.



MAINTENANCE OF INSTALLATION INTEGRITY

- Any replacement or modification must follow the **original fixing system and installation guidelines**.
- Maintain designed ventilation gaps and drainage paths.

2038
AMBERLINE
TEAK



DON'Ts – Practices to Avoid

(EN 438-Based Precautions)



DO NOT USE ABRASIVE MATERIALS

- **DO NOT USE:**

- Abrasive powders
- Steel wool
- Scouring pads
- Sandpaper or similar materials

Abrasive action may damage the decorative surface layer tested under EN 438.



DO NOT USE HIGH-PRESSURE CLEANING

- **DO NOT USE HIGH-PRESSURE WATER JETS, ESPECIALLY:**

- At panel joints
- Along edges
- Near fixings

Excessive pressure may compromise fixings or allow moisture ingress behind panels.



DO NOT ALLOW PROLONGED CHEMICAL CONTACT

- **DO NOT ALLOW CEMENT SLURRY, MORTAR, SEALANTS, OR AGGRESSIVE SUBSTANCES TO DRY OR REMAIN ON THE SURFACE.**
- **REMOVE CONSTRUCTION RESIDUES IMMEDIATELY AFTER INSTALLATION.**



DO NOT USE AGGRESSIVE CHEMICALS

Avoid prolonged or repeated contact with:

- **STRONG ACIDS OR ALKALIS**
- **HIGHLY CONCENTRATED BLEACH**
- **CHLORINE-BASED INDUSTRIAL CLEANERS**
- **ORGANIC SOLVENTS**
(E.G., ACETONE, MEK, THINNERS),
UNLESS EXPLICITLY APPROVED

Such substances may adversely affect surface appearance or long-term performance.



DO NOT CAUSE MECHANICAL DAMAGE

- **AVOID IMPACT FROM SHARP OR HEAVY OBJECTS.**
- **DO NOT DRAG METAL TOOLS, SCAFFOLDING COMPONENTS, OR LADDERS ACROSS THE SURFACE.**



DO NOT APPLY ADDITIONAL SURFACE COATINGS

- **DO NOT APPLY:**
 - Paints
 - Sealers
 - Waxes
 - Protective coatings not approved by the manufacturer

EN 438 Compact HPL is supplied as a finished decorative surface and does not require additional coatings.



IMPORTANT EN 438-RELATED NOTES

- EXTERIOR COMPACT HPL IS TESTED UNDER EN 438 FOR **WEATHER RESISTANCE, UV STABILITY, AND MOISTURE RESISTANCE.**
- MINOR SURFACE APPEARANCE CHANGES OVER TIME DUE TO NATURAL EXPOSURE ARE NORMAL AND DO NOT AFFECT STRUCTURAL OR FUNCTIONAL PERFORMANCE.
- PROPER MAINTENANCE ENHANCES LONG-TERM AESTHETICS BUT DOES NOT ALTER THE INHERENT PERFORMANCE DEFINED BY EN 438.



CONCLUSION

- WHEN MAINTAINED IN ACCORDANCE WITH THE ABOVE **DO'S AND DON'TS**, EXTERIOR COMPACT HPL MANUFACTURED AS PER **EN 438** WILL RETAIN:
 - Long-term colour stability
 - Surface integrity
 - At panel joints
 - Functional performance under exterior conditions

The product requires **minimal maintenance** compared to many alternative façade materials.



SAMRAT PLYWOOD LIMITED

SCO 827, First Floor, NAC Manimajra Chandigarh, India - 160101

☎ : +91 8195960111 ✉ : info@samratply.in

🌐 : samrathpl.com Follow us on  