

SAMRAT EXTERIOR COMPACT HPL

100% DEDICATED TO MANUFACTURING
EXTERIOR HPL FAÇADE PANELS





2026 -27




FAÇADE-GRADE HPL PANELS • BUILT FOR LONG-TERM • OUTDOOR PERFORMANCE.

 **9+ MILLION m²**
INSTALLED GLOBALLY
TILL 2025

 **25+**
COUNTRIES
WORLDWIDE

 **SINCE 2007**
EXTERIOR HPL
EXPERIENCE

 **FOCUSSED.**
SPECIALISED.
DEDICATED TO EXTERIOR HPL.



INDEX

01	SAMRAT HPL AT A GLANCE	PG. 1
02	WHAT IS EXTERIOR COMPACT HPL	PG. 2
03	WHY EXTERIOR HPL FOR MODERN FACADES	PG. 3
04	KEY BENEFITS	PG. 4
05	WHY SAMRAT EXTERIOR HPL?	PG. 5
06	100% EXTERIOR HPL FACUS	PG. 6
07	SUPERIOR DECOR SUPERIOR PERFORMANCE	PG. 7
08	LONG-TERM COLOUR & BOND STABILITY	PG. 8
09	FIRE PERFORMANCE FOCUS	PG. 9
10	PRECISE RESIN FLOW COMPLETE PERFORMANCE	PG. 10
11	HIGH-DENSITY COMPACT STRUCTURE	PG. 11
12	SAMRAT HPL VS OTHER CLADDING PRODUCT	PG. 12
13	ENVIRONMENTAL & HEALTH ADVANTAGES	PG. 13
14	APPLICATION FIELDS	PG. 14
15	KEY FEATURES AT A GLANCE	PG. 15
16	CERTIFICATIONS & STANDARDS	PG. 16
17	GLOBAL TRUST	PG. 17
18	SAMRAT HPL KNOWLEDGE SERIES	PG. 18
19	PRODUCT SPECIFICATION	PG. 19
20	TECHNICAL PERFORMANCE SNAPSHOT	PG. 20
21	WOODEN COLLECTIONS	PG. 21
22	MARBLE COLLECTIONS	PG. 22
23	PLAIN COLLECTIONS	PG. 23-28
24	DOP	PG. 29-30
25	WARRANTY DISCLAIMER	PG. 31-32



SAMRAT HPL AT A GLANCE

Driven by innovation. Built on trust.
Delivering world-class Exterior HPL
façade solutions across the globe.



OUR VISION

To lead the global HPL façade cladding revolution with innovative, durable, and design-driven surface solutions.



OUR MISSION

To deliver world-class Exterior HPL façade solutions that blend advanced technology, durability, and design excellence, while expanding Samrat's trusted global presence.



18 YEARS

Manufacturing Excellence

18 years of focused expertise in producing high performance Exterior HPL for façade applications.



1000+ CITIES GLOBALLY

Global Installations

A visible presence across diverse architectural projects and urban environments worldwide.



100% FOCUS

100% Focus Exterior HPL Manufacturers Company



1 SQM to
9 Million+ sqm

Installed by 2025

A strong symbol of market trust, reflecting large-scale usage across global projects.



21+ CERTIFICATE'S

Internationally Accredited

Supported by internationally relevant certifications, testing, and technical validation.



25+ COUNTRIES

1 Country to 25+ Countries

Trusted Presence Expanding across international markets with growing confidence from customers and partners.



150+ CHANNEL PARTNERS GLOBALLY

Worldwide Network

Strengthened by a growing ecosystem of distributors, associates, and business partners across regions.

GLOBAL REACH. TRUSTED BY PROFESSIONALS. BUILT TO PERFORM.

WHAT IS EXTERIOR COMPACT HPL ?

Exterior compact hpl is a high-pressure laminate panel engineered for long-term outdoor performance.

Manufactured by compressing multiple layers of kraft papers impregnated with phenolic resin, bonded with decorative papers and melamine resin, under high temperature and pressure. The result is a dense, self-supporting panel with exceptional structural strength, weather resistance and dimensional stability, purpose-built for exterior façade applications.



FACADE GRADE

Engineered specifically for outdoor conditions and ventilated facade systems.



DURABLE & RELIABLE

High impact resistance, moisture stability and long-lasting performance.



WEATHER RESISTANT

Resistant to UV rays, rain, humidity, heat, cold and temperature fluctuations.



SUSTAINABLE CHOICE

Long service life and responsible manufacturing for a better tomorrow.



LOW MAINTENANCE

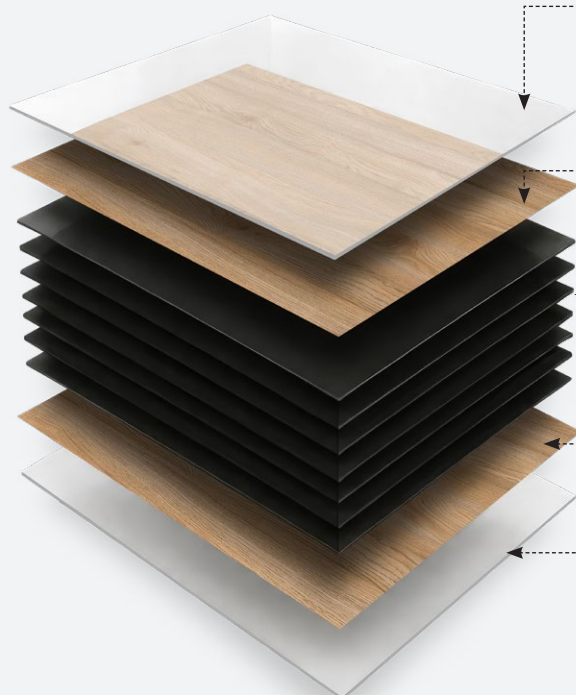
Easy to clean and retain its appearance with minimal maintenance.



DESIGN FREEDOM

Wide range of colours, finishes and textures for limitless architectural possibilities.

PRODUCT STRUCTURE



- 1 **UV - PMMA LAYER (Top Surface)**
Transparent UV - PMMA layer provides superior UV protection, anti-fade performance and excellent weatherability.
- 2 **DECOR PAPER LAYER WITH MELAMINE RESIN**
High quality décor paper impregnated with melamine resin for rich aesthetics, colour stability and surface strength.
- 3 **KRAFT PAPER LAYERS WITH PHENOLIC RESIN**
Multiple layers of kraft papers impregnated with phenolic resin and compressed under high pressure for outstanding strength, impact resistance and moisture stability.
- 4 **DECOR PAPER LAYER WITH MELAMINE RESIN**
Balances the panel and enhances dimensional stability with a décor paper impregnated with melamine resin.
- 5 **UV - PMMA LAYER (Bottom Surface)**
Transparent UV - PMMA layer on the reverse side protects against moisture ingress and ensures long-term durability.

ENGINEERED FOR EXCELLENCE



High Surface Durability



UV & Colour Stability



Low Water Absorption



Impact Resistant



Temperature Stability



Complies with EN 438 Standard for Exterior HPL

WHY EXTERIOR HPL FOR MODERN FAÇADES?

Exterior Compact HPL delivers the perfect balance of aesthetics, performance and long-term value - making it the material of choice for modern architecture.



BUILT FOR REAL CLIMATES

Performs in extreme sun, rain, wind, humidity, heat and cold.



LONG LASTING PERFORMANCE

Engineered for decades of beauty, strength and reliability.



DESIGN FREEDOM

Wide range of colours, decors, finishes and textures.



SUSTAINABLE CHOICE

Long service life, low maintenance and recyclable.



SMART INVESTMENT

Lower lifecycle cost with high performance and durability.

KEY BENEFITS



EXCEPTIONAL WEATHER RESISTANCE

Engineered to withstand UV radiation, rain, humidity, heat, cold and pollution for outstanding performance in all climates.



LIGHTWEIGHT YET STRONG

High bending strength and self-supporting structure make it ideal for ventilated façades while reducing structural load.



HIGH IMPACT & SCRATCH RESISTANCE

Resists impact, scratches and abrasion in high-traffic areas, maintaining the façade's beauty for years.



DESIGN FLEXIBILITY

Extensive range of colours, decors, finishes and textures to bring any architectural vision to life.



MOISTURE & STAIN RESISTANT

Non-porous surface prevents water absorption, making it resistant to stains, mould, mildew and most chemicals.



LOW MAINTENANCE

Easy to clean and retain its appearance with minimal maintenance over the entire life cycle.



EASY TO REPLACE & REPAIR

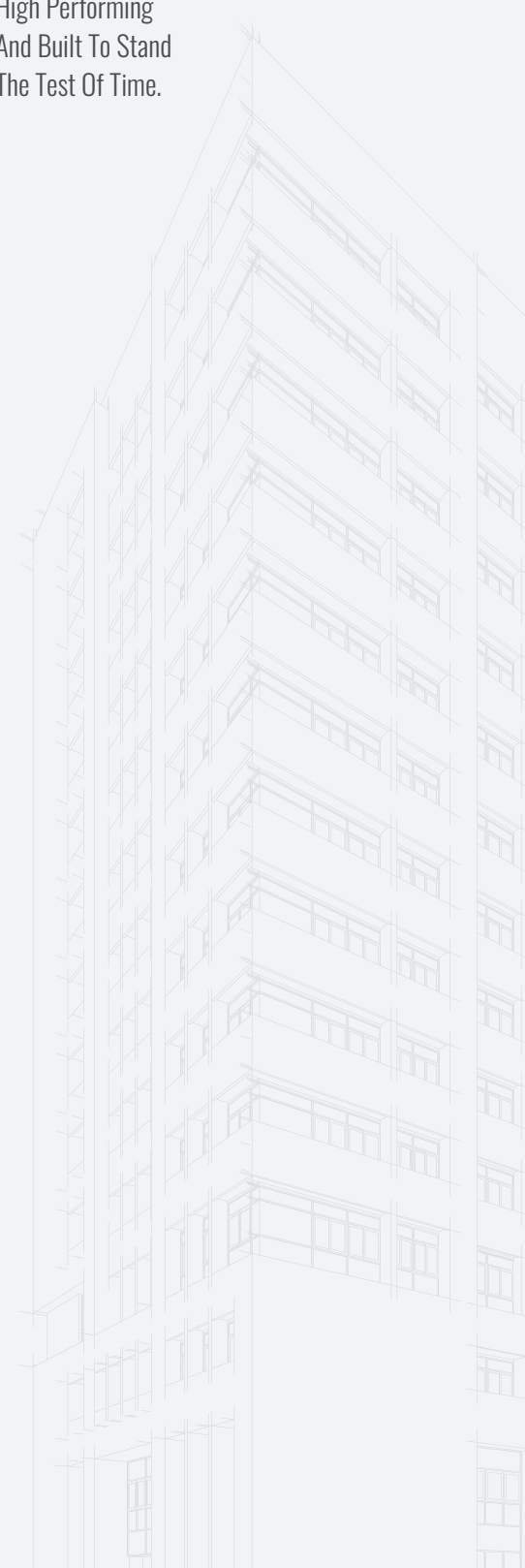
Individual panels can be easily removed and replaced without affecting the entire façade system.



SUSTAINABLE & FUTURE READY

Long service life, low maintenance and recyclable - a smart choice for sustainable architecture.

Exterior Hpl
Empowers Architects
To Create Façades
That Are Beautiful,
High Performing
And Built To Stand
The Test Of Time.



EXTERIOR HPL ONLY.

WHY SAMRAT EXTERIOR HPL?

Because façade performance requires manufacturing focus.

Samrat Exterior HPL is purpose-built for long-term outdoor façade performance. It is not a side product-it is engineered with one focus: delivering enduring performance in real-world conditions.



9+ MILLION m²
INSTALLED GLOBALLY
TILL 2025



25+
COUNTRIES
WORLDWIDE



SINCE 2007
EXTERIOR HPL
EXPERIENCE



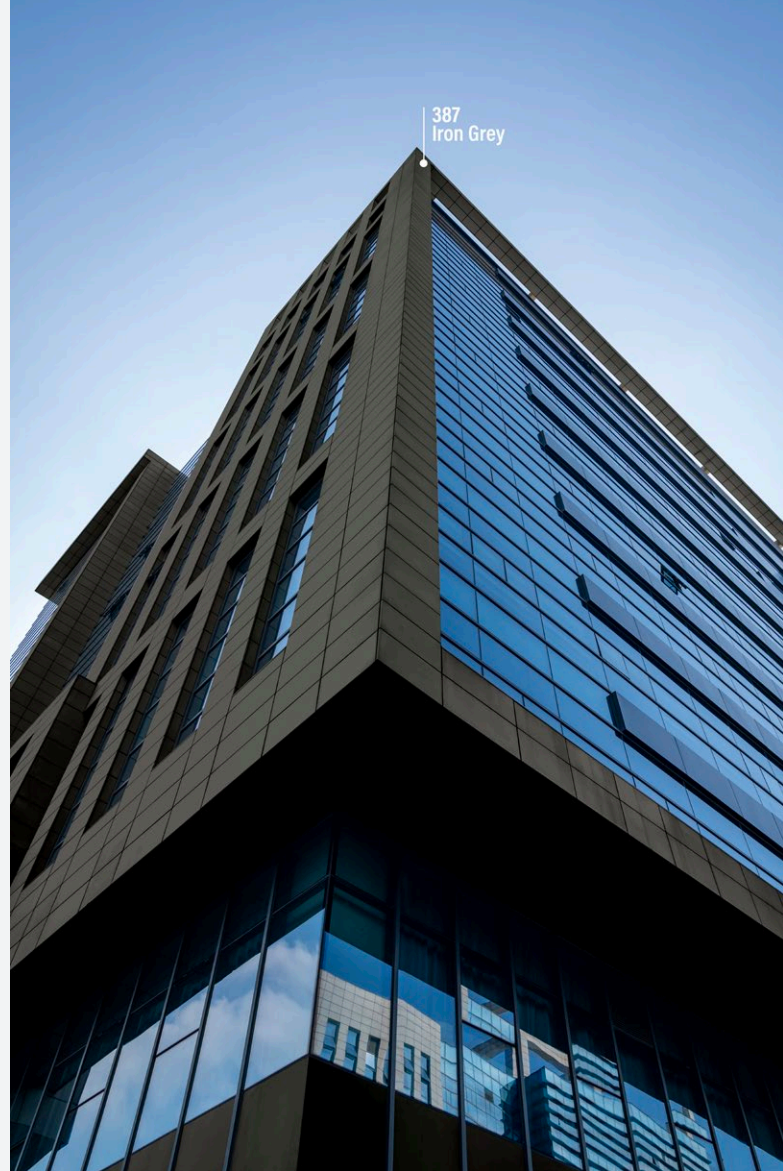
18+ YEAR OF
EXTERIOR HPL
EXPERTISE

GLOBAL REACH. REAL CLIMATE PERFORMANCE. FAÇADE-FOCUSED ENGINEERING.

100% EXTERIOR HPL FOCUS

**A SPECIALIST MANUFACTURER,
NOT A GENERAL LAMINATE PRODUCER.**

- EVERY RESOURCE.
- EVERY PROCESS.
- EVERY INNOVATION.
- DEDICATED TO EXTERIOR EXCELLENCE.



SINGLE MINDED FOCUS 100% dedicated to exterior HPL. Nothing else.



PURPOSE BUILT Processes, people and technology designed exclusively for exterior performance.

100%

NOT A SIDE PRODUCT Exterior HPL is our core. Our commitment. Our promise.



CONSISTENT BY DESIGN Uniform quality and reliability in every panel, every time.



FAÇADE FIRST We understand façades. We solve façade challenges. We deliver façade confidence.

WHY IT MATTERS



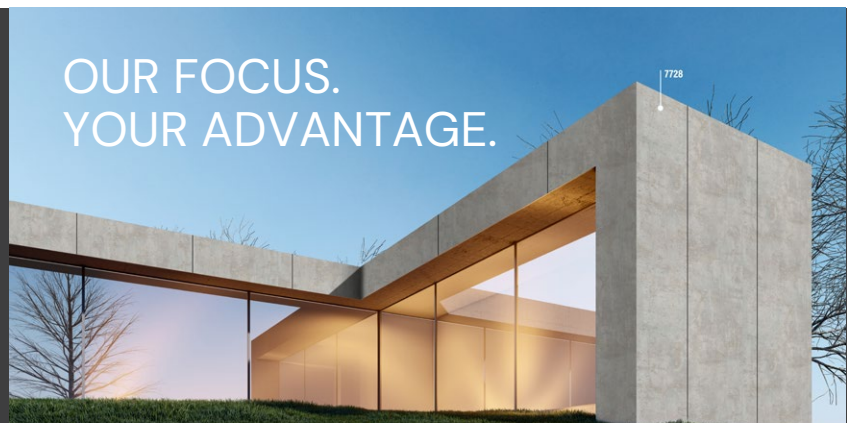
BETTER
PERFORMANCE



LONGER
LIFE



BEAUTIFUL
FAÇADES



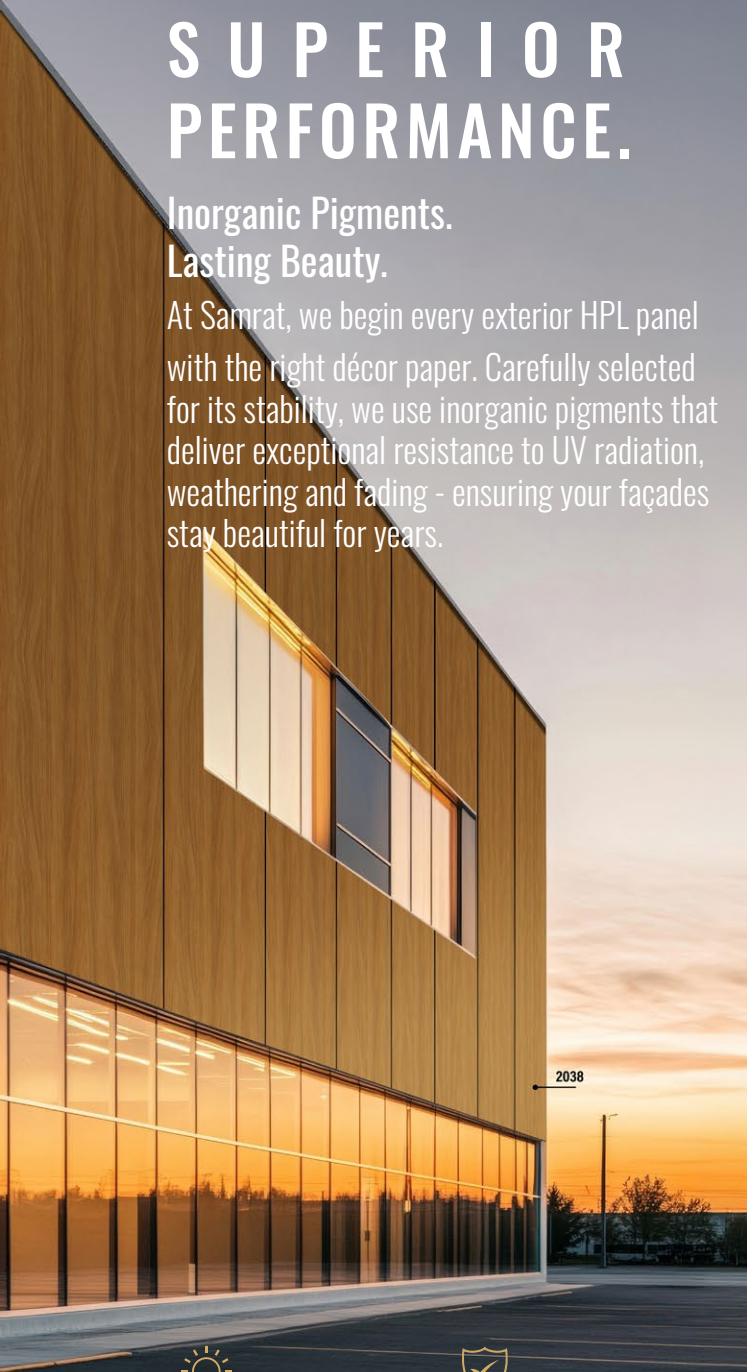
OUR FOCUS.
YOUR ADVANTAGE.

When the manufacturer is 100% focused,
the facade performs better.

SUPERIOR DÉCOR. SUPERIOR PERFORMANCE.

Inorganic Pigments. Lasting Beauty.

At Samrat, we begin every exterior HPL panel with the right décor paper. Carefully selected for its stability, we use inorganic pigments that deliver exceptional resistance to UV radiation, weathering and fading - ensuring your façades stay beautiful for years.



UV STABLE COLOURS

Inorganic pigments resist UV radiation and prevent colour fading.



EXCEPTIONAL WEATHERABILITY

Withstands extreme heat, rain, humidity and pollution without compromising beauty.



CHEMICAL & STAIN RESISTANT

Superior resistance to chemicals, stains and surface degradation.



LONG-TERM AESTHETICS

Retains original colour, texture and finish for decades of performance.

Beautiful today. Built to last.

The foundation of every high-performance façade.

THE POWER OF INORGANIC PIGMENTS

Unlike organic dyes, inorganic pigments are naturally stable. They do not break down under UV exposure and deliver superior lightfastness, heat stability and weather resistance - making them the ideal choice for exterior applications.



EXCELLENT UV RESISTANCE

Prevents fading and colour shift over time.



HIGH WEATHER DURABILITY

Resists harsh weather, moisture and pollutants.



SUPERIOR COLOUR RETENTION

Keeps façades vibrant and beautiful for years.



ENVIRONMENTALLY STABLE

Non-reactive and resistant to chemical attack.

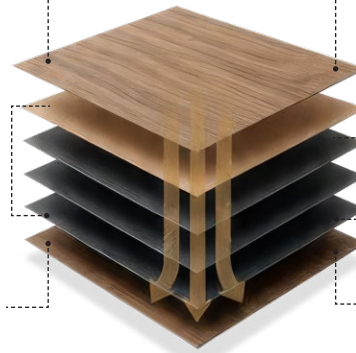
THE IMPORTANCE OF RESIN FLOW

Resin flow is the lifeline of an Exterior HPL panel. It ensures complete impregnation of décor and kraft papers, creating a void-free structure with unmatched strength and durability.

DÉCOR PAPER (Top)

KRAFT PAPER

DÉCOR PAPER (Bottom)



COMPLETE IMPREGNATION
Ensures all layers are uniformly saturated for maximum strength.

STRONG INTER-LAYER BOND
Creates a monolithic structure that withstands impact, stress and extreme weather.

VOIDS FREE PERFORMANCE
Eliminates weak points, ensuring long-term dimensional stability and reliability.



OUR COMMITMENT

From pigment to panel, we control every detail - choosing the right décor papers, ensuring optimal resin flow, and delivering panels that perform beautifully in real world conditions.

KEY TAKEAWAY

The right décor paper + optimal resin flow = Exceptional façade performance that lasts for decades.



CAREFULLY
SELECTED PAPERS



OPTIMAL
RESIN FLOW



SUPERIOR
PERFORMANCE



LONG TERM
RELIABILITY

Better pigments. Better flow. Better façades.
That's the Samrat HPL difference.

LONG-TERM COLOUR & BOND STABILITY. BEAUTY THAT LASTS.

Premium raw materials, advanced impregnation and controlled curing ensure long-term stability of colour and structural bond - even in the harshest outdoor environments.



BUILT FOR DECADES



UV COLOUR STABILITY

Inorganic pigments and UV absorbers protect colours from fading and chalking.



EXCELLENT BOND INTEGRITY

Uniform resin impregnation creates a strong bond between layers that lasts for years.



MOISTURE & HUMIDITY RESISTANCE

Resin-rich core and high-density structure prevent moisture ingress and delamination.



THERMAL CYCLING RESISTANCE

Engineered to withstand extreme temperature fluctuations without compromising performance.

RIGOROUS TESTED. PROVEN STABILITY.

- ✓ Accelerated UV Exposure (QUV)
- ✓ Boiling Water Resistance
- ✓ Freeze-Thaw Resistance
- ✓ Bond Strength (Dry & Wet)
- ✓ Colourfastness to Xenon Arc
- ✓ Humidity Cycling
- ✓ Thermal Shock



OUR COMMITMENT

We design every panel to stay beautiful and strong - for decades, not just years.

KEY TAKEAWAY

Advanced materials + precision processes = Long-term colour & bond stability you can rely on.





FIRE

PERFORMANCE FOCUS. SAFETY AT THE CORE.

Façades must protect lives and property. Our Exterior HPL panels are engineered to meet the most stringent fire safety standards globally.



FIRE SAFE BY DESIGN



INHERENT FIRE RESISTANCE
HPL is self-supporting and does not contribute to fire growth.



LOW SMOKE GENERATION
Engineered to produce low smoke for better visibility and safety.



LOW FLAME SPREAD
Limits flame spread and reduces risk of fire propagation.



COMPLIANT & CERTIFIED
Tested to international standards for peace of mind.

TESTED TO GLOBAL STANDARDS

- NRO
- ITC : BS1D0
- IGNITO : Bs1D0
- EN 13501-1

PERFORMANCE THAT MATTERS

- FIRE RESISTANCE **HIGH**
- SMOKE DEVELOPMENT **LOW**
- FLAME SPREAD **LOW**
- SAFETY ASSURANCE **HIGH**



OUR COMMITMENT
We don't just meet standards. we build safety into every panel.

KEY TAKEAWAY
Fire performance is not an add-on. It's engineered into the core of every Samrat HPL panel.



 **SAFETY FIRST**
People, Property, Peace of mine

 **RIGOROUSLY TESTED**
To global fire standards.

 **GLOBALLY COMPLIANT**
For projects worldwide.

 **BUILT RESPONSIBLY**
For a safer tomorrow.

PRECISE RESIN FLOW. COMPLETE PERFORMANCE.

Resin flow is the lifeline of an Exterior HPL panel. It ensures complete impregnation of décor and kraft papers, creating a void-free structure with unmatched strength, stability and durability.



WHAT PRECISE RESIN FLOW DELIVERS



COMPLETE IMPREGNATION

Ensures all layers are uniformly saturated for maximum strength.



EXCEPTIONAL BOND STRENGTH

Strong inter-layer bond that withstands impact, stress and extreme weather.



VOID-FREE STRUCTURE

Eliminates weak points for superior dimensional stability and reliability.

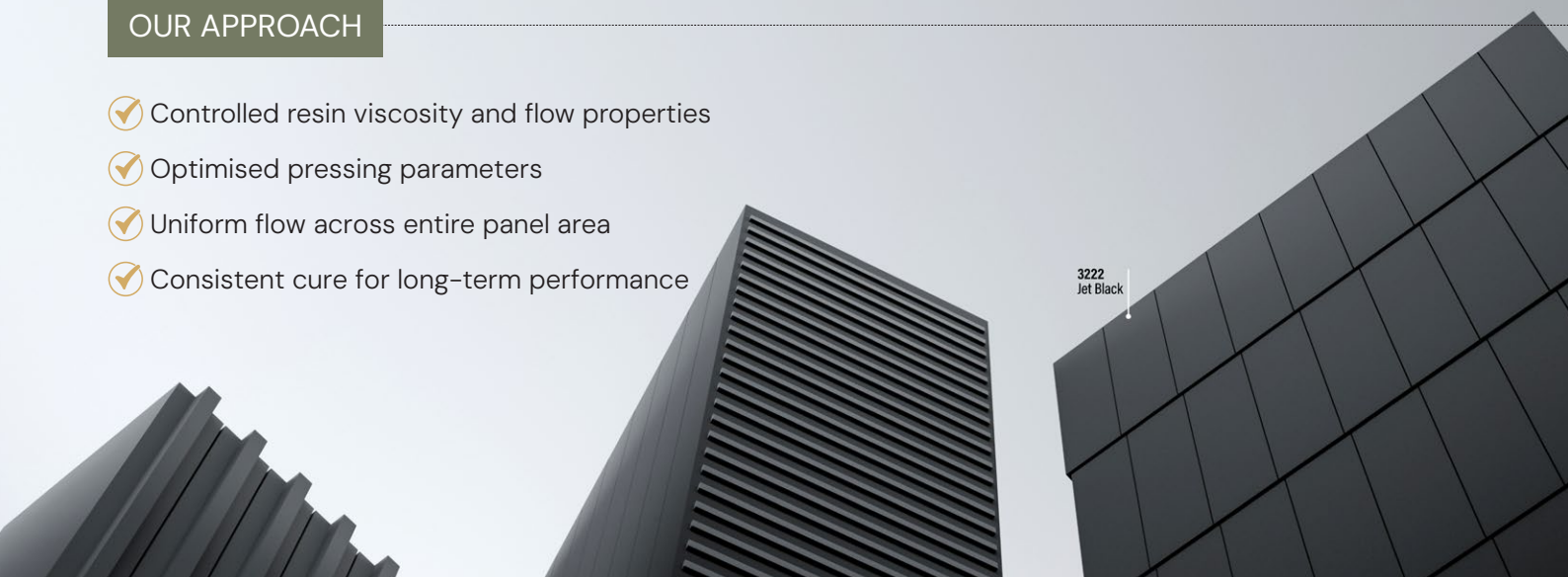


LONG-TERM DURABILITY

Maintains performance, appearance and bond strength for decades.

OUR APPROACH

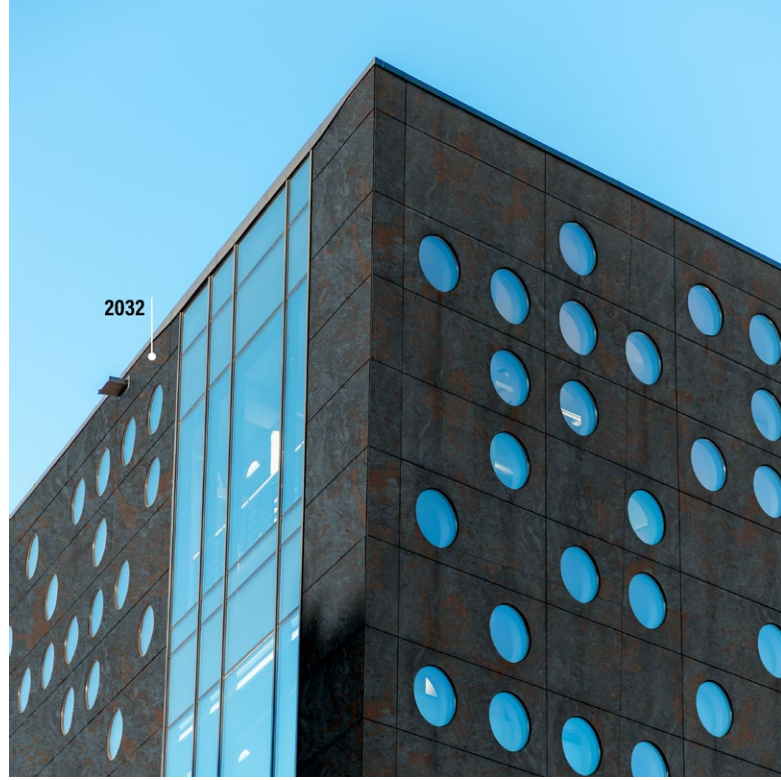
- ✓ Controlled resin viscosity and flow properties
- ✓ Optimised pressing parameters
- ✓ Uniform flow across entire panel area
- ✓ Consistent cure for long-term performance



Better flow. Stronger bond.
Built to perform. Built to last.

HIGH-DENSITY COMPACT STRUCTURE. STRENGTH YOU CAN RELY ON.

Engineered under high pressure to achieve superior density, impact resistance and dimensional stability - built for extreme outdoor conditions.



ENGINEERED FOR EXTERIORS



HIGH DENSITY

Pressed under high pressure (e50 MPa) for a dense, compact core.



IMPACT RESISTANT

Withstands impact, flexural stress and heavy wind loads



DIMENSIONALLY STABLE

Low water absorption and swelling for consistent performance.



BUILT TO LAST

Resists delamination, edge swelling and structural deterioration.

COMPACT BY DESIGN



Decor Paper
(Top)

Kraft Paper

Decor Paper
(Bottom)



SUPERIOR STRENGTH

High density delivers exceptional mechanical performance.



WEATHER RESISTANT

Performs in heat, rain, humidity and freeze-thaw cycles.



LONG SERVICE LIFE

Engineered to maintain performance and aesthetics for decades.



OUR COMMITMENT

Every panel is engineered for high density and compactness - because real façades demand real strength.

KEY TAKEAWAY

- High-density compact structure
- Long-term reliability.
- safety and peace of mind.



HIGH PRESSURE
ENGINEERING



SUPERIOR DENSITY
& COMPACTNESS



IMPACT & WEATHER
RESISTANCE



DECADES OF
PERFORMANCE

SAMRAT HPL VS OTHER CLADDING PRODUCTS

Built for façades. Engineered for long-term outdoor performance.

PERFORMANCE CRITERIA	NATURAL WOOD	ACP	FIBRE CEMENT	NATURAL STONE	CERAMIC / TILE CLADDING	SAMRAT EXTERIOR HPL
LIGHTWEIGHT FACADE SOLUTION	X	✓	X	X	X	✓✓
UV & COLOUR STABILITY	X	◐	✓	✓	✓	✓✓
WEATHER & MOISTURE RESISTANCE	X	◐	✓	✓	✓	✓✓
IMPACT & SCRATCH RESISTANCE	X	◐	◐	✓		✓✓
FIRE PERFORMANCE	X	◐	✓	✓	✓	✓✓
LOW MAINTENANCE	X	◐	◐	◐	◐	✓✓
EASY PANEL REPLACEMENT / RETROFIT	X	✓	X	X	X	✓✓
DIMENSIONAL STABILITY	X	◐	✓	✓	✓	✓✓
FAST INSTALLATION FOR VENTILATED FACADES	X	✓	◐	X	X	✓✓
LONG SERVICE LIFE	X	◐	✓	✓	✓	✓✓
DESIGN FLEXIBILITY	✓	✓	◐	◐	◐	✓✓
LIFECYCLE VALUE	X	◐	◐	◐	◐	✓✓

✓✓ Excellent | ✓ Good | ◐ Fair | X Poor



LIGHTWEIGHT

Reduces structural load and installation burden



WEATHER STABLE

Performs reliably in real outdoor climates



LOW MAINTENANCE

Easy to clean and built to last



FAÇADE FRIENDLY

Designed for modern ventilated façades

ENVIRONMENTAL & HEALTH ADVANTAGES



Chemically inert and fully cured surface



Low formaldehyde emission for healthier indoor and outdoor environments



Non-porous surface supports hygiene and easy cleaning



Resistant to common household chemicals and cleaning agents



Easy to disinfect using standard cleaning practices



Long service life reduces replacement frequency and material waste



Low maintenance façade solution with reduced lifecycle burden



Durable exterior performance helps extend building material life



EPD and sustainability-focused manufacturing support responsible specification



Responsible sourcing options and environmentally conscious production practices



Suitable for demanding applications where hygiene, cleanliness and durability matter



Low VOC / Low emission profile supports healthier spaces



NRO



Built for long life. Designed with environmental responsibility in mind.

APPLICATION FIELDS



Where Samrat Exterior HPL Performs



SOFFIT



RECESSED WINDOW



VENTILATED FACADES



PARAPET WALL



BOUNDARY WALL



BALCONY



PARTITION WALL



PILLOR



GATE



TABLE TOP



EXTERIOR APPLICATIONS

- FACADES
- BALCONIES
- SOFFITS
- BOUNDARY WALLS
- RECESSED WINDOWS
- GATES
- URBAN FURNITURE & SIGNAGE



MARKET SEGMENT

- RESIDENTIAL
- COMMERCIAL BUILDINGS
- HOTELS
- HOSPITALS
- EDUCATION
- PUBLIC BUILDINGS
- TRANSPORT INFRASTRUCTURE



WHY IT WORKS

- WEATHER RESISTANT
- LOW MAINTENANCE
- DESIGN FLEXIBILITY
- IMPACT RESISTANT
- UV STABLE
- LONG SERVICE LIFE

KEY FEATURES AT A GLANCE



12 YEAR
WARRANTY*



FIRE
RESISTANT



SUPERIOR LIGHT
FASTNESS PERFORMANCE
(UV resistant)



CHEMICAL
RESISTANT



LOW
VOC EMISSION



SALT CORROSION
RESISTANT



ENVIRONMENT
FRIENDLY



ACOUSTIC
RESISTANT



ANTI - BACTERIAL
AND ANTI - FUNGAL



MOISTURE
RESISTANT



TERMITE
RESISTANT



CAN WITHSTAND
EXTREME TEMPERATURE
CONDITION FROM -
60C TO +45C



RESISTANCE
TO ACID RAINS



EXCELLENT ANTI
GRAFFITI PROPERTIES

12232 |

CERTIFICATIONS & STANDARDS

Quality. Certified. Trusted by Design.

Samrat Exterior HPL is manufactured to the highest international benchmarks, delivering trusted quality, superior performance, and sustainable solutions for every project.



QUALITY MANAGEMENT
ISO 9001

Consistent quality and continuous improvement.



ENVIRONMENTAL MANAGEMENT
ISO 14001

Responsible practices for a sustainable future.



OCCUPATIONAL HEALTH & SAFETY
ISO 45001

Safe workplaces and effective safety management.



EUROPEAN COMPLIANCE
CE

Complies with relevant European health, safety and environmental laws.



RESPONSIBLE SOURCING
FSC® CERTIFIED

Sourced from responsibly managed forests.



ENVIRONMENTAL PRODUCT DECLARATION
EPD

Transparent environmental impact data across the product life cycle.

NRO

NRO CERTIFIED

Meets stringent quality standards for reliability and performance.



LOW EMISSION
E1 / LOW VOC

Low formaldehyde emission for healthier indoor and outdoor environments.



ANTI VIRAL

Inhibits the growth of viruses on surface for enhanced hygiene.



ANTI BACTERIAL

Hygienic surface with anti-bacterial properties for lasting protection.



MPA HANNOVER
Tested for quality, safety, and performance.



CARB P2 COMPLIANT
Meets California Air Resources Board standards for low emissions and air quality.



FIRE PERFORMANCE
EN 13501-1 (B-s1,d0)

Tested for reaction to fire. Low smoke. No flaming droplets.



STANDARDS SUMMARY
EN 438
High-pressure decorative laminates (HPL)

EN 13501-1
Fire classification of construction products

EN 438-2, -3, -6
Requirements for performance, properties and test methods



QUALITY ASSURED
Rigorous testing. Consistent performance.



FIRE SAFE
Tested for fire performance. Built for safety.



SUSTAINABLE BY DESIGN
Responsible sourcing. Lower environmental impact

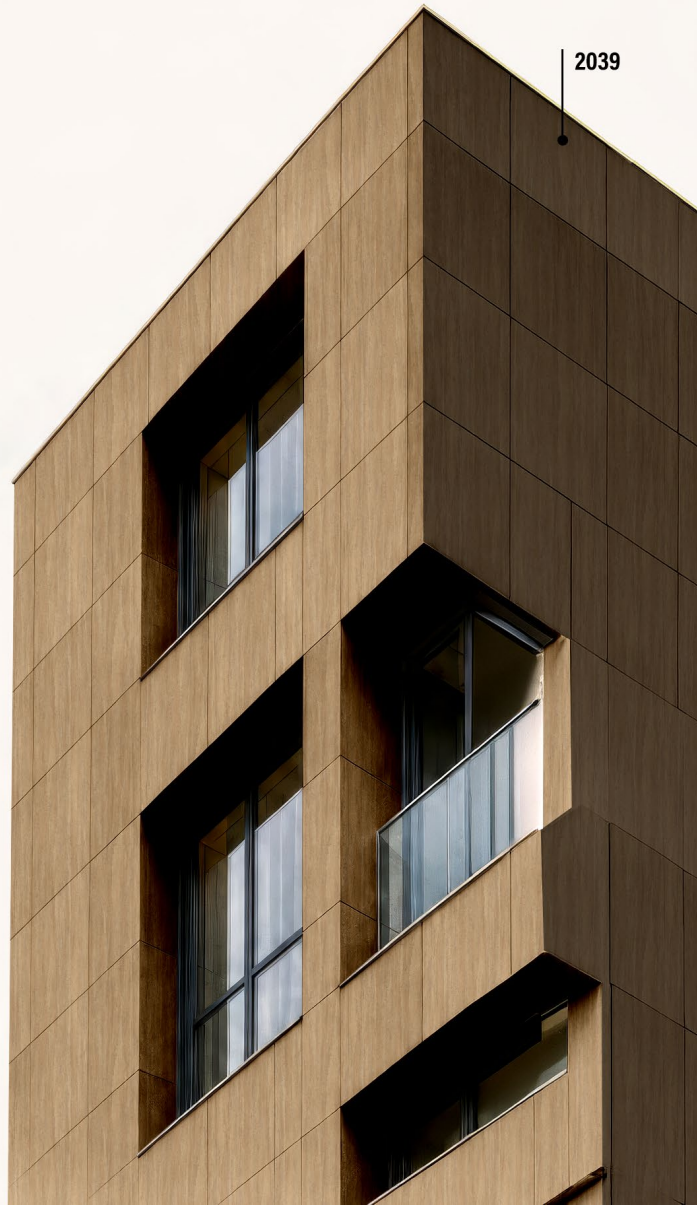


SPECIFICATION READY
Compliant. Documented. Project confident.



GLOBAL TRUST

9+ MILLION m² INSTALLED GLOBALLY



Proven on real facades. Trusted across global markets.



35+ Countries



Thousands of Projects



Trusted by Partners

PROVEN PERFORMANCE IN REAL CLIMATES



Extreme Heat



High Humidity



Coastal Conditions



Freezing Cold



Dry & Dusty Climates



OUR COMMITMENT

Global exposure. Local understanding.
Long-term façade confidence.



SAMRAT HPL KNOWLEDGE SERIES

**TECHNICAL BLOGS.
REAL FAÇADE LEARNING.**

At Samrat HPL, we believe that a better façade begins with better technical understanding.

Our Knowledge Series is created to help architects, façade consultants, installers, distributors and project owners make informed decisions about Exterior Compact HPL.

From EN 438 standards and UV resistance to fire performance, installation detailing, water absorption, density, VOC emissions and delamination resistance - every article is written with practical clarity and façade-specific precision.



Because Exterior HPL is not only about appearance. It is about long-term performance in real climates.



EXPLORE TOPICS THAT MATTER

EN 438 & Exterior HPL Standards

Understanding the European benchmark for HPL façade panels.



← SCAN TO READ

01



UV Resistance & Colour Stability

Why pigments, décor paper and surface protection matter outdoors.



← SCAN TO READ

02



Fire Performance

Understanding B-s1,d0, smoke, droplets and in Exterior HPL façade fire safety.



← SCAN TO READ

03



Installation & Façade Detailing

Common installation mistakes and how to avoid them.



← SCAN TO READ

04



Density, Strength & Impact Resistance

Why compact structure matters for long-term façade performance.



← SCAN TO READ

05



Water Absorption & Weather Resistance

How Exterior HPL performs in rain, humidity and real climates.



← SCAN TO READ

06



Formaldehyde, VOC & REACH Awareness

Health, compliance and emission topics explained simply.



← SCAN TO READ

07



Delamination & Resin Technology

Why resin impregnation and process control decide panel life.



← SCAN TO READ

08

“ **KNOWLEDGE BUILDS CONFIDENCE.
CONFIDENCE BUILDS BETTER FAÇADES.** ”

Explore the full knowledge series at :

samrathpl.com/blogs



Technical. Researched. Practical.



Written for Professionals. By Experts.



Real Façade Challenges. Practical Insights.



Clear Language. Better Decisions.



Better Knowledge. Better Buildings.

PRODUCT SPECIFICATION

EXTERIOR COMPACT HPL

High pressure laminate engineered for exterior applications. Built to withstand harsh weather, UV exposure and everyday impact with long lasting performance and aesthetic excellence.



THICKNESS

3 MM • 4 MM • 6 MM • 8 MM
10 MM • 12 MM UPTO 20 MM

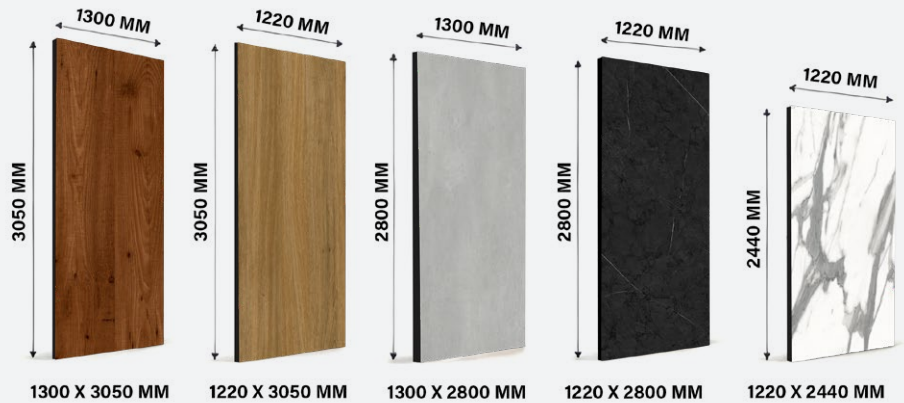


6 MM & 8 MM

ARE THE MOST RECOMMENDED THICKNESS FOR EXTERIOR COMPACT HPL.



SIZE OFFERED



UV RESISTANT
Resists fading & maintains colour for years.



WEATHER PROOF
Withstands extreme weather conditions.



IMPACT RESISTANT
High strength & durable surface.



EASY TO MAINTAIN
Low maintenance & easy to clean.

ENGINEERED SURFACES. DESIGNED TO ENDURE.

TECHNICAL PERFORMANCE SNAPSHOT

Engineered to perform.
Tested to exceed.



2037



EN 438 COMPLIANT
Meets European standards for Exterior HPL.



UV & WEATHER RESISTANT
Withstands harsh outdoor conditions and colour fading.



FIRE RETARDANT
Class B-s1,d0 performance for façade safety.



LOW WATER ABSORPTION
Enhanced durability in humid and wet conditions.



HIGH IMPACT RESISTANCE
Strong and durable against daily wear and impact.



CONSISTENT QUALITY
Tested across multiple parameters for reliable quality.

TECHNICAL PERFORMANCE SUMMARY

S.NO.	PROPERTY	TEST METHOD AS PER EN 438	UNIT	REQUIREMENT (EN 438 PART 6:2016) (EXTERIOR GRADE)	SAMRAT HPL TYPICAL RESULT
1	Panel Surface Quality	EN 438-2, 6.2.4.2	mm ² /m ²	≤ 2.0 (max.)	Complies
2	Thickness & Maximum Variation	EN 438-2-5	mm	6.0 ± 0.40 8.0 ± 0.50	6.0 ± 0.25 8.0 ± 0.27
3	Length & Width	EN 438-2-6	mm	+10/-0	+5/-0
4	Flatness	EN 438-2-9	mm/m	≤ 5.0	Complies
5	Edges Straightness	EN 438-2-7	mm/m	≤ 1.5	≤ 1
6	Edges Squareness	EN 438-2-8	mm/m	≤ 1.5	Complies
7	Resistance to Wet Conditions, Increase in Mass	EN 438-2-15	%	≤ 8.0	4.1
8	Surface Rating	EN 438-2-15	Rating	≥ 4	5
9	Edge Rating	EN 438-2-15	Rating	≥ 3	3
10	Dimensional Stability at Elevated Temperature (Longitudinal)	EN 438-2-17	%	≤ 0.30	0.15
11	Dimensional Stability at Elevated Temperature (Transverse)	EN 438-2-17	%	≤ 0.60	0.29
12	Resistance to Impact by Large Diameter Ball	EN 438-2-21	mm	≥ 1800	2000
13	Resistance to Cigarette Burns	EN 438-2-18	Rating	-	Complies
14	Density	EN ISO 1183-1	g/cm ³	≥ 1.35	1.38 to 1.42
15	Resistance to Fixing (Screw Pull-out Strength) 8.0mm Thick Board	ISO 13894-1	N	≥ 3000	> 3000

LIGHT FASTNESS & WEATHER RESISTANCE

Resistance to Artificial Weathering including Light Fastness, after 650 MJ/m ² Radiant Exposure	EN 438-2-29	Ratina (min.)	≥ 4
Resistance to UV Light, after 1500 hours Exposure	EN 438-2-28	Ratina (min.)	≥ 4
Resistance to Climatic Shock	EN 438-2-19	(ncin.)	≥ 4
		(min.)	≥ 0.95

FIRE PERFORMANCE

Reaction to Fire (EN 13501-1)	Euro Class	B-s1,d0
Smoke Production (EN 13823)	Euro Class	s2
Flaming Droplets (EN 13823)	Euro Class	do



SAMRAT HPL EXTERIOR COMPACT LAMINATES
Tested. Trusted. Built for a lifetime.

All tests are conducted in accredited laboratories. Performance values are typical and subject to variations within manufacturing tolerances.

WOODEN COLLECTIONS



7723



7729



7730



329



330



331



332



415



416



433



709



953



2033



2037



2038



3741



7043



94668



2036



2221



2204



7722



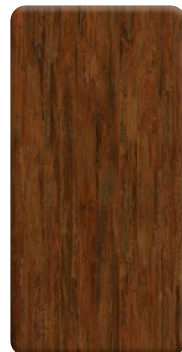
454



453



484



2031



7042



7044



WOODEN COLLECTIONS



7032



7041



7731

● 1220 X 2440 mm
 1220 X 2800 mm
 1220 X 3050 mm

■ 1300 X 2800 mm
 1300 X 3050 mm

MARBLE COLLECTIONS



7727



7728



11567



12232



324



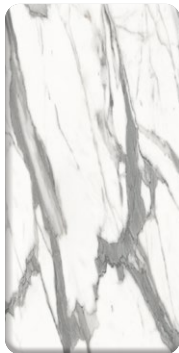
2039



2040



2034



414



822



823



662



2222



2029



2028



2032



7039



7037

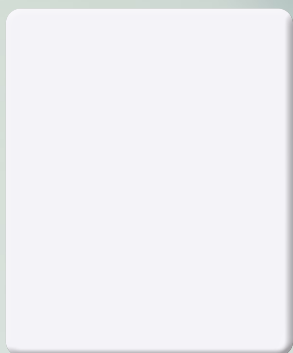


7030

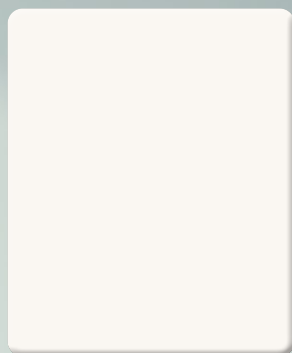


7031

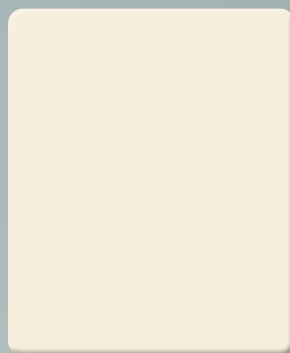
PLAIN COLLECTIONS



101
COLD WHITE



102
FROSTY WHITE



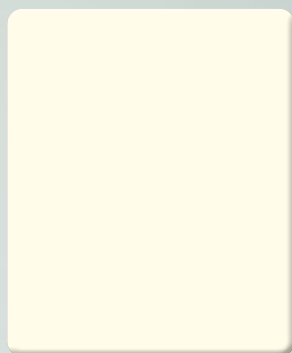
106
IVORY



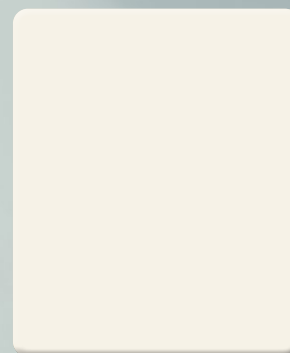
117
DARK GREY



147
YELLOW



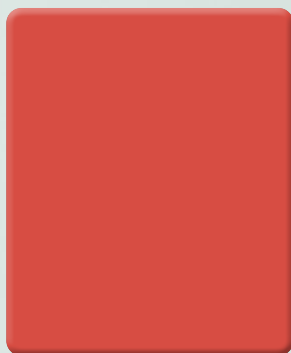
351
SUPER WHITE



354
OFF WHITE



356
MYSORE IVORY



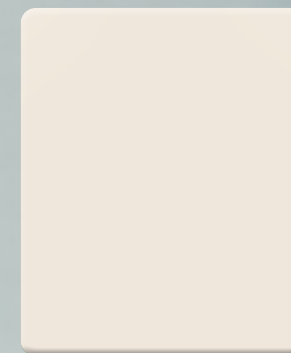
357
CARDINAL RED



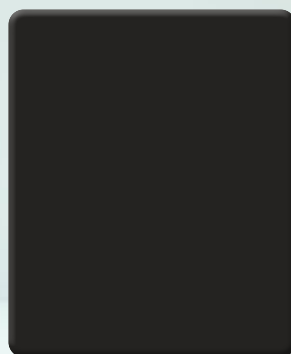
358
IRISH CREAM



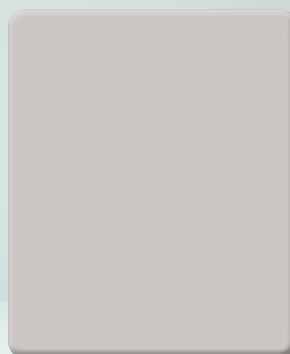
359
FROSTY WHITE



360
PEANUT



361
SLATE GREY



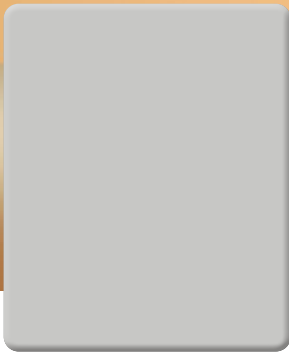
362
GREY



▲ 1220 X 2440 mm
 1220 X 2800 mm
 1220 X 3050 mm
 ◆ 1300 X 2800 mm
 1300 X 3050 mm

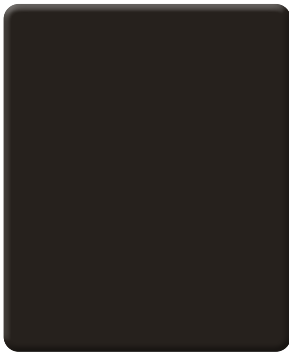


PLAIN COLLECTIONS



▲ 1220 X 2440 mm
 1220 X 2800 mm
 1220 X 3050 mm
 ◆ 1300 X 2800 mm
 1300 X 3050 mm

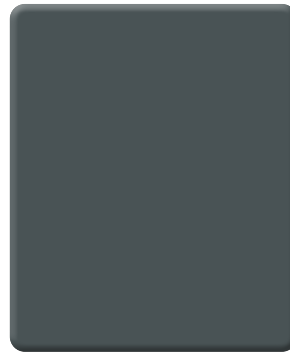
363
GREY



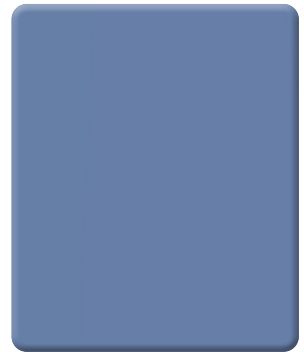
366
CHOCOLATE



367
OXFORD GREY



368
CHARCOAL



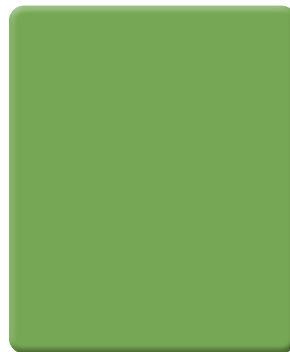
370
GLACIER BLUE



371/5011
NAVY BLUE



372
ELECTRIC BLUE



373
PARROT GREEN



374
HICKORY



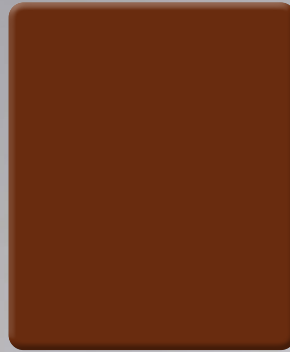
PLAIN COLLECTIONS



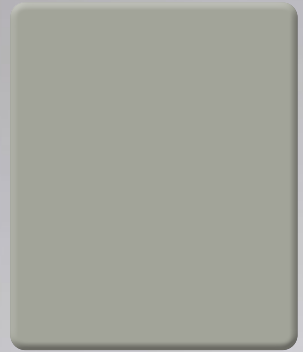
375
BEAVER



376
SILVER GREY



377
FLAMING ORANGE



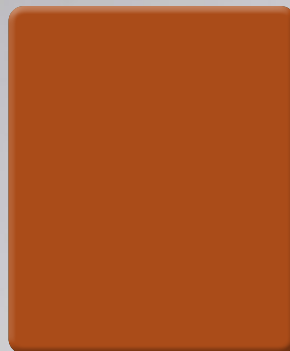
378
METAL GREY



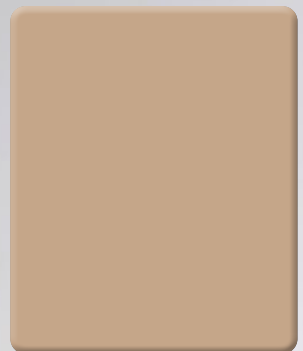
379
WARM GREY



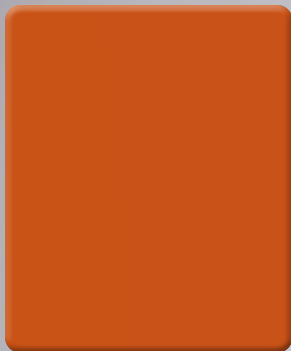
380
CYCLONE



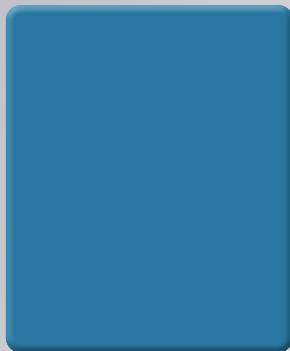
381
ORANGE



382
PEACH



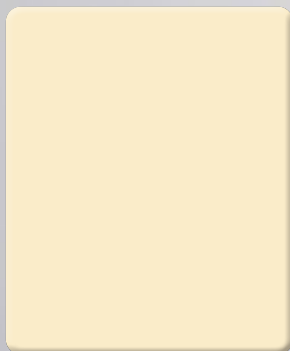
383
MUD



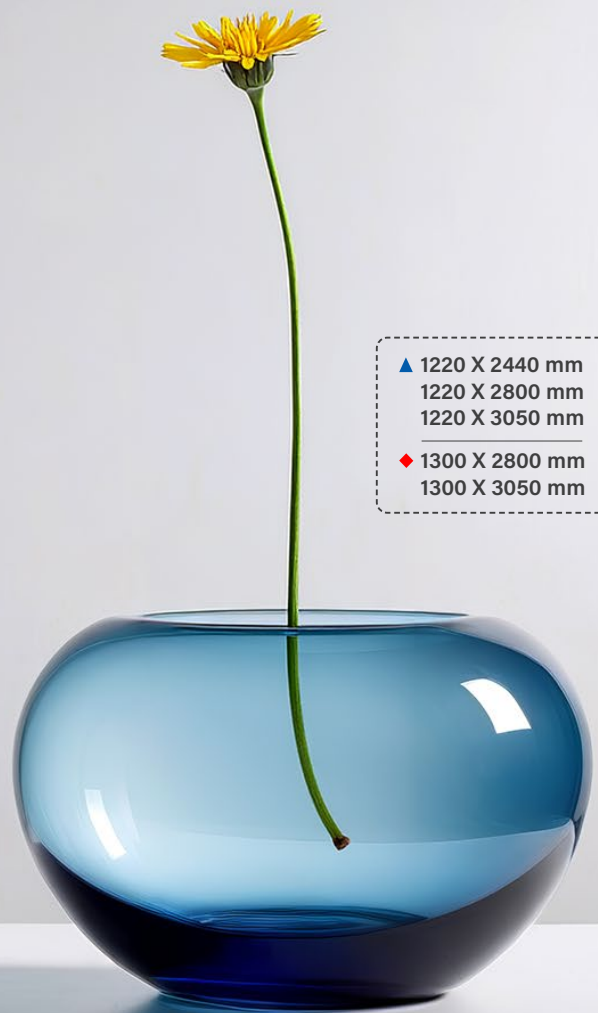
384
CELESTIAL BLUE



385
KIWI GREEN



386
ALMOND



▲ 1220 X 2440 mm
1220 X 2800 mm
1220 X 3050 mm
◆ 1300 X 2800 mm
1300 X 3050 mm

PLAIN COLLECTIONS



▲ 1220 X 2440 mm
 1220 X 2800 mm
 1220 X 3050 mm
 ◆ 1300 X 2800 mm
 1300 X 3050 mm



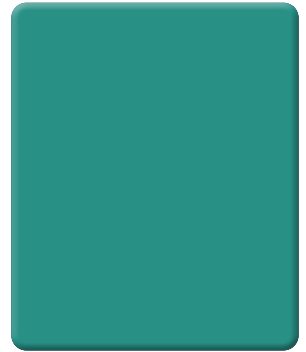
387
GOTHIC GREY



512
OLIVE



516
GREEN



517
AQUA GREEN



522
BLUE



527
ROBIN BLUE



532
BLACKCURRANT



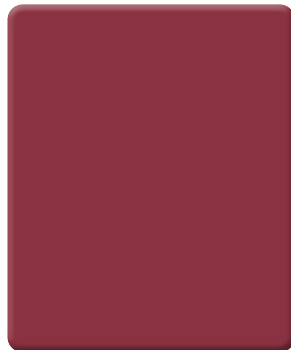
533
BORDEAUX



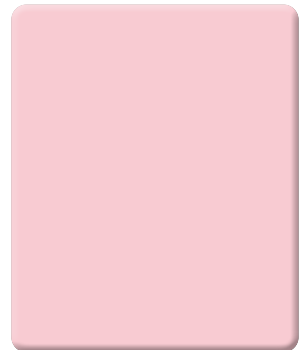
535
VODAFONE RED



539
PINK



540
RED

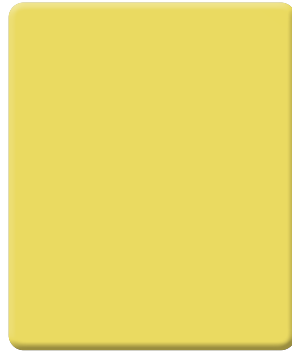


541
BABY PINK

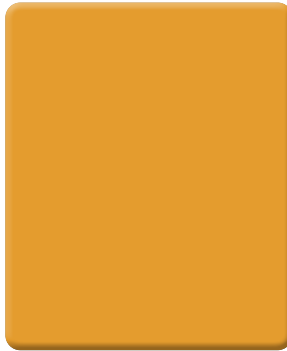
PLAIN COLLECTIONS



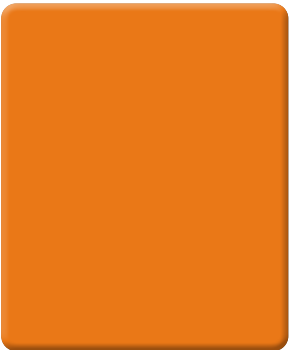
542
PLATINUM WHITE



545
MARIGOLD



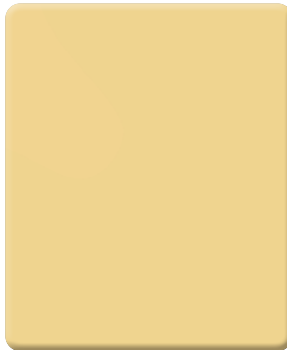
546
MANGO



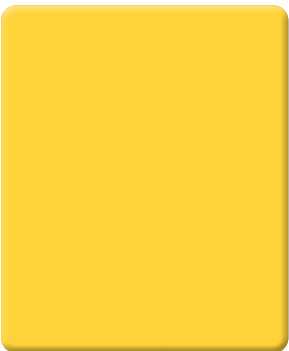
547
ORANGE



549
CLASSIC ORANGE



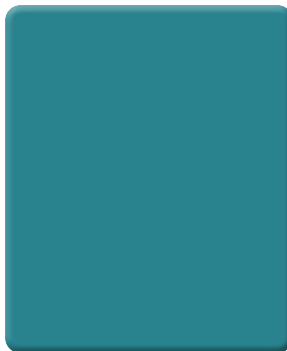
554
SAHARA YELLOW



555
SUNNY YELLOW



561
PLEASANT TURQUOISE



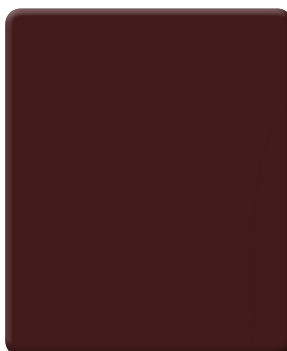
563
SEASIDE TURQUOISE



567
DEEP TURQUOISE



568
TOFFEE YELLOW

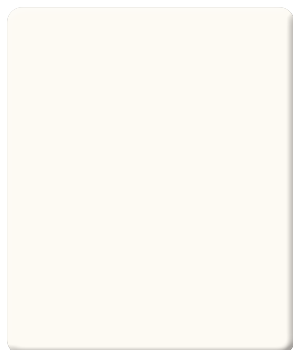


574
MAROON RED



▲ 1220 X 2440 mm
1220 X 2800 mm
1220 X 3050 mm
◆ 1300 X 2800 mm
1300 X 3050 mm

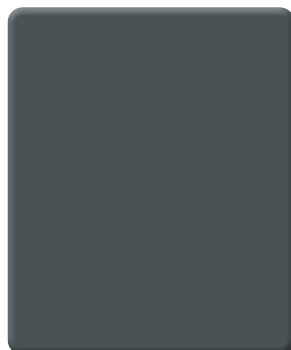
PLAIN COLLECTIONS



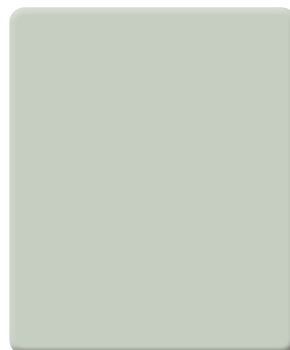
1118
EGG WHITE



6009
DARK GREEN



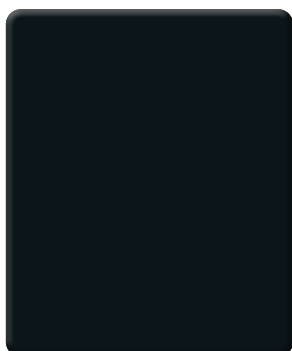
7016
DARK GREY



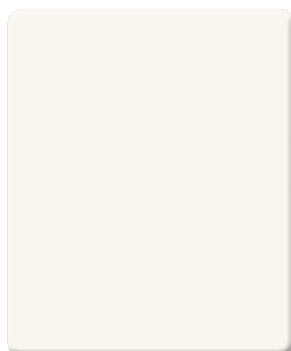
7035
LIGHT GREY



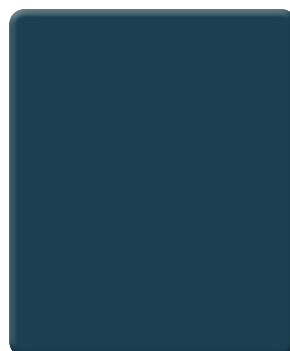
7037
GREY



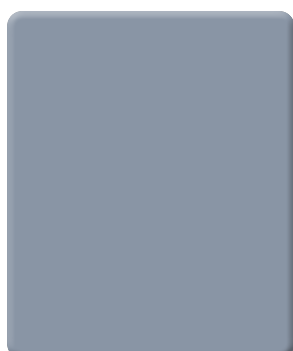
3222
BLACK



9010
FROSTY WHITE



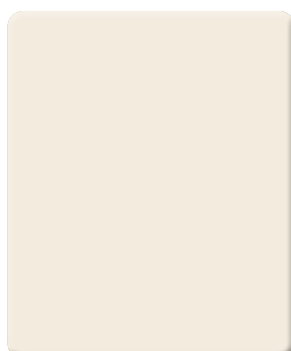
5011
NAVY BLUE



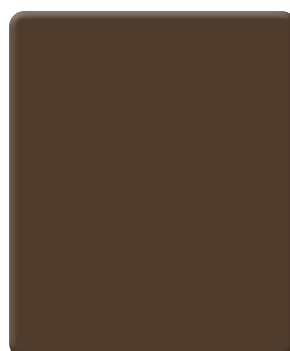
9011
ELEGANT BLUE - GREY



9012
MELLOW GREEN



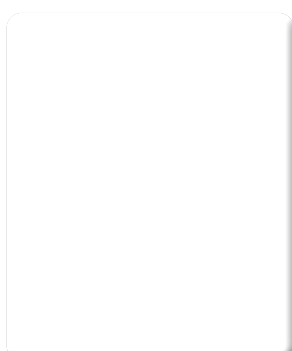
9001
BEIGE



8014
COFFEE



7016
ANTHRACITE



9016
WHITE



9005
BLACK

▲ 1220 X 2440 mm
▲ 1220 X 2800 mm
▲ 1220 X 3050 mm
◆ 1300 X 2800 mm
◆ 1300 X 3050 mm

DOP



DECLARATION OF PERFORMANCE

DoP–SPL/EXT-HPL/2026-01

According to Regulation (EU) No. 305/2011

Declared by: Samrat Plywood Limited

This declaration of performance is issued under the sole responsibility of the manufacturer. The performance of the construction product identified below is in conformity with the declared performance set out in this document.

1. Product type	High Pressure Laminate (HPL) compact laminates for external wall and ceiling finishes
2. Product designation / grade	EGF / EDF – compact laminates for external wall and ceiling finishes
3. Intended use	External wall and ceiling finishes in accordance with EN 438-7:2005
4. Manufacturer	Samrat Plywood Limited Village Birplassi, Nalagarh Distt. Solan, Himachal Pradesh 174101 India
5. AVCP system	System 1
6. Harmonised standard	EN 438-7:2005
7. Laboratory / technical body references	ITC a.s. / CSI Division, Czech Republic (reaction to fire testing and classification) Institut pro testování a certifikaci, a.s., Zlín, Czech Republic (flexural properties) Arihant Analytical Laboratory Pvt. Ltd., Kundli, India (supplementary product characteristics)

Essential characteristics for the declared intended use

Essential characteristic	Harmonised technical specification	Declared performance
Reaction to fire	EN 438-7, Cl. 4.2	Euroclass B-s1,d0 (tested for thickness 6 mm)
Water vapour permeability / resistance factor	EN 438-7, Cl. 4.4	Wet cup $\mu = 110$; Dry cup $\mu = 250$
Resistance to fixing	EN 438-7, Cl. 4.5	1879 N
Direct airborne sound insulation	EN 438-7, Cl. 4.6	NPD
Bonding strength	EN 438-7, Cl. 4.7	NPD
Flexural modulus of elasticity	EN 438-7, Cl. 4.8	14,750 MPa (6 mm); 9,687 MPa (12 mm)
Flexural strength	EN 438-7, Cl. 4.8	171 MPa (6 mm); 122 MPa (12 mm)
Thermal resistance / conductivity	EN 438-7, Cl. 4.9	NPD
Content of pentachlorophenol	EN 438-7, Cl. 4.10.1	NPD
Release of formaldehyde	EN 438-7, Cl. 4.11.1	NPD
Durability – immersion in boiling water	EN 438-7, Cl. 4.13.1	Pass; mass increase 0.75 %, thickness increase 2.73 %, appearance rating 4
Durability – resistance to wet conditions	EN 438-7, relevant durability evaluation	Pass; max. mass increase 1.95 %, appearance rating 4



Samrat Plywood Limited
SCO-827, First Floor, NAC Manimajra,
Near Housing Board Chowk,
Chandigarh 160101, India

Plywood Division
T: +91 1762 280190, 280697
F: +91 1762 280240
Mica Division
T: +91 1795 265307, 265308
F: +91 1795 265306

E: admin@samratply.in
www.samratply.in

CIN - U20211CH1987PLC007836



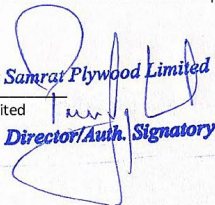
Technical documents supporting this declaration:

- Flexural strength test report No. 755200675-02, Institut pro testování a certifikaci, a.s., issued 30 April 2025.
- Reaction to fire classification report No. PK-26-023 and supporting test reports No. 25/P691 and 25/P692, ITC a.s., issued 9 February 2026.
- Arihant Analytical Laboratory Pvt. Ltd. report No. AAL BMT-20160602001, issued 6 July 2016, covering supplementary characteristics including water vapour resistance factor, resistance to fixing, durability and density.

Notes: NPĐ = No Performance Determined. Reaction to fire classification B-s1,d0 is supported by testing on 6 mm compact laminate for external wall and ceiling finishes. Where multiple thicknesses were tested, the exact tested values are stated as declared performance without extrapolation.

Place: Chandigarh, India
Date: 14 March 2026

For Samrat Plywood Limited
Authorized Signatory



For Samrat Plywood Limited
Director/Auth. Signatory



WARRANTY DISCLAIMER



SAMRAT HPL

10-YEAR LIMITED INTERNATIONAL WARRANTY FOR EXTERIOR COMPACT PANELS

1. Warranty Coverage

Samrat Plywood Limited ("Samrat"), an Indian manufacturer of high-quality surfacing solutions, provides this 10-Year Limited Warranty for its Exterior Compact High Pressure Laminate (HPL) Panels ("Panels") to the original purchaser ("Customer"). Samrat guarantees that the Panels will retain their essential characteristics under normal environmental conditions and in compliance with recommended installation and maintenance practices.

2. This warranty covers:

- Resistance to surface degradation
- Resistance to significant color fading
- Retention of mechanical strength
- Durability against climatic exposure such as UV rays, rain, and temperature variation

This warranty applies for a period of ten (10) years from the date of delivery of the Panels to the Customer.

3. Conditions for Validity

The warranty is applicable only when all the following conditions are met:

- The Customer has paid the full purchase price for the Panels.
- The Panels have been installed using ventilated façade techniques, in accordance with Samrat's technical specifications and relevant local building codes.
- Panels are installed vertically or with adequate slope and ventilation when used in sloped applications.
- Written notice of any defect is provided to Samrat within 30 days of its discovery, including invoice copies and photographic or certified expert evidence of the issue.
- The defect must be verified by Samrat or by an independent, internationally recognized testing agency, subject to prior approval.
- No unauthorized modifications or use of incompatible accessories or cleaning agents has taken place.

4. Remedy

In the event a Panel is found defective within the warranty period, Samrat shall, at its discretion:

- Replace the defective Panel(s), or
- Refund the original purchase price of the affected Panel(s).

If a particular design, color, or finish is discontinued, Samrat may offer a comparable alternative. Replacement under this warranty does not renew or extend the original warranty period.



Samrat Plywood Limited
SCO-827, First Floor, NAC Manimajra,
Near Housing Board Chowk,
Chandigarh 160101, India

T: +91 172 4590713

Plywood Division
T: +91 1762 280190, 280697
F: +91 1762 280240

Mica Division
T: +91 1795 265307, 265308
F: +91 1795 265306

E: admin@samratply.in
www.samratply.in

CIN - U20211CH1987PLC007836



5. Exclusions

This warranty does not cover:

- Natural aging effects such as minimal discoloration or minor loss of gloss.
- Panels installed horizontally or without proper ventilation.
- Damage caused by faulty installation systems, building movement, vandalism, or acts of God (e.g., earthquakes, floods, storms).
- Defects resulting from failure to comply with installation, maintenance, or local code guidelines.
- Third-party damages, indirect or consequential losses, loss of profit, or business interruption.
- Cost of dismantling or reinstallation, unless explicitly covered by extended terms in writing.

6. Governing Law & Dispute Resolution

This limited warranty is governed by and construed in accordance with Indian Law.

Any dispute arising under this warranty shall be subject to the exclusive jurisdiction of the courts of Chandigarh, India. International treaties concerning the sale of goods are expressly excluded.

7. Additional Notes

This warranty is the sole and exclusive warranty offered by Samrat. All other express or implied warranties, including but not limited to merchantability, fitness for a particular purpose, or arising from trade usage or prior dealings, are hereby excluded unless otherwise confirmed in writing by Samrat.

For further assistance or to report a claim,
please contact:



Samrat Plywood Limited
SCO-827, First Floor, NAC Manimajra,
Near Housing Board Chowk,
Chandigarh 160101, India
T: +91 172 4590713

Plywood Division
T: +91 1762 280190, 280697
F: +91 1762 280240

Mica Division
T: +91 1795 265307, 265308
F: +91 1795 265306


E: admin@samratply.in
www.samratply.in

CIN - U20211CH1987PLC007836




REACH US HERE



 SCO 827, First Floor, NAC Manimajra,
Chandigarh, India - 160101

 www.samrathpl.com |  info@samrathpl.in

 +91 81959 60111